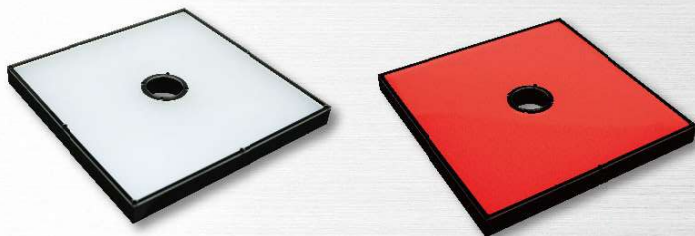


# High Directivity Square Lights



## Outline

The square planar light is combined with the hollow design to uniformly irradiate high-directional light in the direction coaxial with the camera.

## Feature

1. Equipped with a high-directivity optical mode, it can suppress the diffusion of light. Its illumination is twice more than DSQ2.
2. DDSQ makes the object's outline edge contrast clear.
3. No blurred gray scale gradients affect the focus, causing misjudgment and affecting accuracy.
4. Suitable for the detection of objects with a wide range of appearance and large size.

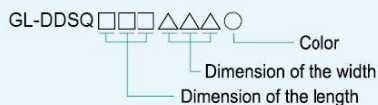
## Major applications

1. Robots, ex: motor parts spot welding, placing wafer.
2. Multiple outline inspection.

## Available Models

Model	Color	Power Consumption	Weight (g)	Dimension
GL-DDSQ150150R-24	●	24V/11.8W		
GL-DDSQ150150W/B/G-24	○ ● ●	24V/14.7W	404	1
GL-DDSQ150150IR-24	●	24V/11.8W		
GL-DDSQ208208R-24	●	24V/28.8W		
GL-DDSQ208208W/B/G-24	○ ● ●	24V/35.3W	783	2
GL-DDSQ208208IR-24	●	24V/28.8W		
GL-DDSQ300300R-24	●	24V/52W		
GL-DDSQ300300W/B/G-24	○ ● ●	24V/63.4W	1157	3
GL-DDSQ300300IR-24	●	24V/52W		

## Model explanation



## Imaging examples

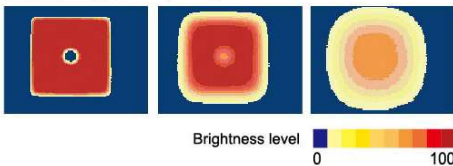


**GL-DDSQ208208W-24**

Alignment check

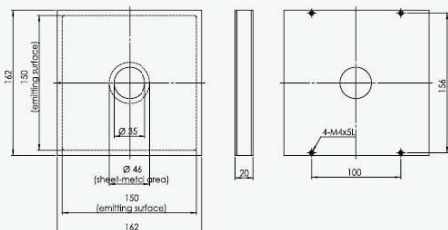
## Luminous intensity distribution characteristics

Illuminate Height : 0CM, 3CM, 10CM

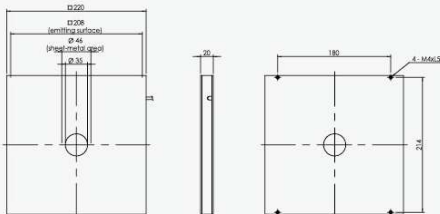


## Dimensional Diagrams(mm)

**1**



**2**



**3**

